

ANNUAL REPORT 2023



Wild Ones Natural Landscapers, Ltd.

2285 Butte des Morts Beach Road,
Neenah, WI 54956

920-730-3986 - info@wildones.org

<https://wildones.org/>



FOCUS AND VALUES



Respect is at the heart of Wild Ones. We have respect for each other, for nature and for the earth.



We're an **inclusive community**. Diverse voices and backgrounds make us stronger. That's why we welcome everyone to join us.



We provide **evidence-based information**, because the seeds of change spread most efficiently when grounded in data. We monitor and share the latest evidence-informed strategies.



We're **action and growth oriented**. Just dig in! We learn, grow, and share our knowledge.

VISION

Native plants & natural landscapes thriving in every community

MISSION

Wild Ones promotes native landscapes through education, advocacy, and collaborative action.



EDUCATION

We improve the environment through local chapters and hands-on education.

In 2023, Wild Ones advanced its educational mission, enhancing understanding and engagement with native plants and ecosystems through various programs and platforms.

Program Highlights

- Dedicated over 18,000 volunteer hours to organize educational activities, achieving an 87% increase in event attendance from the previous year.
- A notable 130% rise in family-friendly events, making education accessible to a broader audience.
- Over 1,300 educational opportunities organized.

National Education Programs

- The Lorrie Otto Seeds for Education Grant program awarded \$10,125 in funding to 23 youth-serving projects.
- The 36th volume of the *Wild Ones Journal* provided valuable insights and resources on native plants and natural landscaping.
- Expanded digital outreach through the Wild Ones YouTube channel and blog, offering webinars and designer insights, spreading our educational reach.



ADVOCACY

A healthy planet starts with native plants.

In 2023, Wild Ones drove significant environmental advocacy, impacting legislation, community practices, and public awareness.

Legislative Achievements

- Played a key role in designating April as **National Native Plant Month**.
- Supported New York's "**Birds and Bees Protection Act**", significantly reducing neonicotinoid use by 80%-90%.

Community Engagement

- Directly influenced local ordinances and practices, with active participation from chapters such as Door Peninsula and West Cook.
- West Cook Chapter advocacy saved a local park from being converted into a parking lot, leading to its redevelopment with native plants.

Public Advocacy

- Utilized media effectively, with significant coverage including a detailed discussion on rewilding in a covenant-controlled neighborhood by the NoVA Seedling Chapter co-founder on the "Native Plants, Healthy Planet" podcast.
- Over 90% of chapters engaged in public outreach, connecting with more than 99,000 individuals through various events.

18.1% of chartered chapters engaged in lobbying and advocacy activities.

14.5% of chartered chapters successfully influenced public policy/codes/ordinances in alignment with Wild Ones mission.

Top chapters for lobbying and advocacy activities: Keweenaw, New Jersey Gateway, West Cook



COLLABORATION

Connecting people and native plants for a healthy planet.

In 2023, Wild Ones' commitment to fostering partnerships and collaborative action played a pivotal role in expanding the reach and impact of its mission to promote native plants and landscapes.

Strategic Partnerships

- Engaged with over 500 industry partners, spanning environmental organizations, educational institutions, and community groups, to drive collective action for native plant conservation.

Community Projects

- Chapters reported 161 new relationships with other organizations. Chapters are ramping up community collaborations; 32% of community collaborations were initiated in 2023.

Outreach and Engagement

- Collaborative efforts resulted in a wide array of public garden projects, with chapters contributing over 24,000 native plants to 175 native habitat demonstration gardens and restoration projects.

Wild Ones Proudly Supports:



62.7% of chartered chapters initiated new collaborations.

Chapters with the greatest number (≥ 15) of active collaborations with other organizations: Fox Valley Area, Greater Cleveland, Tennessee Valley, River City - Grand Rapids Area, St. Croix Oak Savanna



MILESTONES

Chapter Recognition

Greater Kane County (IL) Chapter was honored with an Elgin Image Award for their ongoing work over eight years in collaboration with the Elgin History Museum to restore the home and design, install and maintain native landscaping on the grounds of the historic Nancy Kimball Cobblestone House; City of Elgin

New Jersey Gateway (NJ) Chapter held a native planting workshop at Hudson County Community College and chapter leaders Gisela Ferrer and Hailey Benson received certificates of appreciation for native plants donated to the environmental club's garden project; Hudson County Community College Environmental Club

Education Extraordinaires

Wild Ones was recognized as this year's Monarch Joint Venture "Education Extraordinaires"! Wild Ones has been a longtime MJV partner and this award recognizes not only our partnership and the Wild for Monarchs program, but all of the work our chapters do that makes an impact on pollinator conservation!



Anniversaries

5 YEARS

Southeast Missouri, MO
South Shore MA, MA
Louisville, KY
Middle Tennessee, TN

10 YEARS

West Cook, IL
Front Range, CO

20 YEARS

St. Croix Oak Savanna, MN

25 YEARS

St. Cloud, MN
St. Louis, MO



GRASSROOTS

A knowledgeable, hands-on, and supportive community

Wild Ones is a grassroots organization offering hands-on education through the work of our local chapters. We are a movement of people who are passionate about our mission and inspire others to improve the environment with native plants.

Grassroots Community

- Over 700 members served in leadership roles, coordinating the efforts of 2,200 volunteers.
- Chapters increased outreach activities by 34%, connecting with over 99,000 people through public events.

Wild Ones Growth

- Welcomed over 3,800 new members through proactive engagement in media and at community events.
- Membership grew to over 9,600 individuals, businesses, and affiliates in 2023 - and we are now over 10,000 members strong!

Youth Engagement Initiatives

- Chapters collaborated with over 36 youth organizations to educate and involve young people in native plant initiatives.

6,020 volunteer hours dedicated to 428 public outreach events at farmers markets, festivals, fairs, home and garden shows, tours and public libraries

Top chapters in number of public outreach events: St. Louis (36), Greater Cleveland (30), Keweenaw (20), Mountain Laurel (18), South Bend (18), Pennsylvania Ridge & Valley (15)



IMPACT

Native plants & natural landscapes thriving in every community

Native habitat projects embody Wild Ones mission. In 2023, 54 chartered chapters spearheaded 175 public native plant gardens and habitat projects.

Habitat Transformation


- Nearly 842,000 square feet turned into native plant habitats and 79,820 square feet of turf removed.
- Management improvements were applied to over 465,000 square feet of these gardens, including the reduction of pesticides and environmentally friendly maintenance practices.

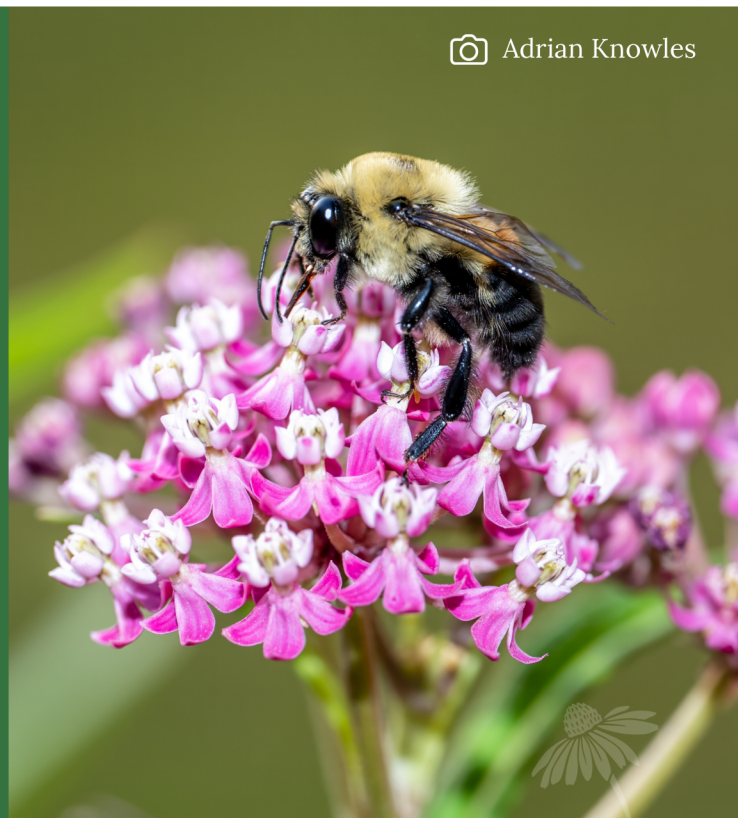
Native Plants in the Ground

- Over 24,000 native plants were donated by chartered chapters to public projects.
- Chapters held nearly 150 native plant sales, shares, and exchanges, significantly contributing to the supply of plants for projects across Wild Ones' reach.

Chapters sold 127,816 native plants and facilitated the exchange or giveaway of an additional 27,526 - totaling of over 155,000 plants bolstering native habitats.

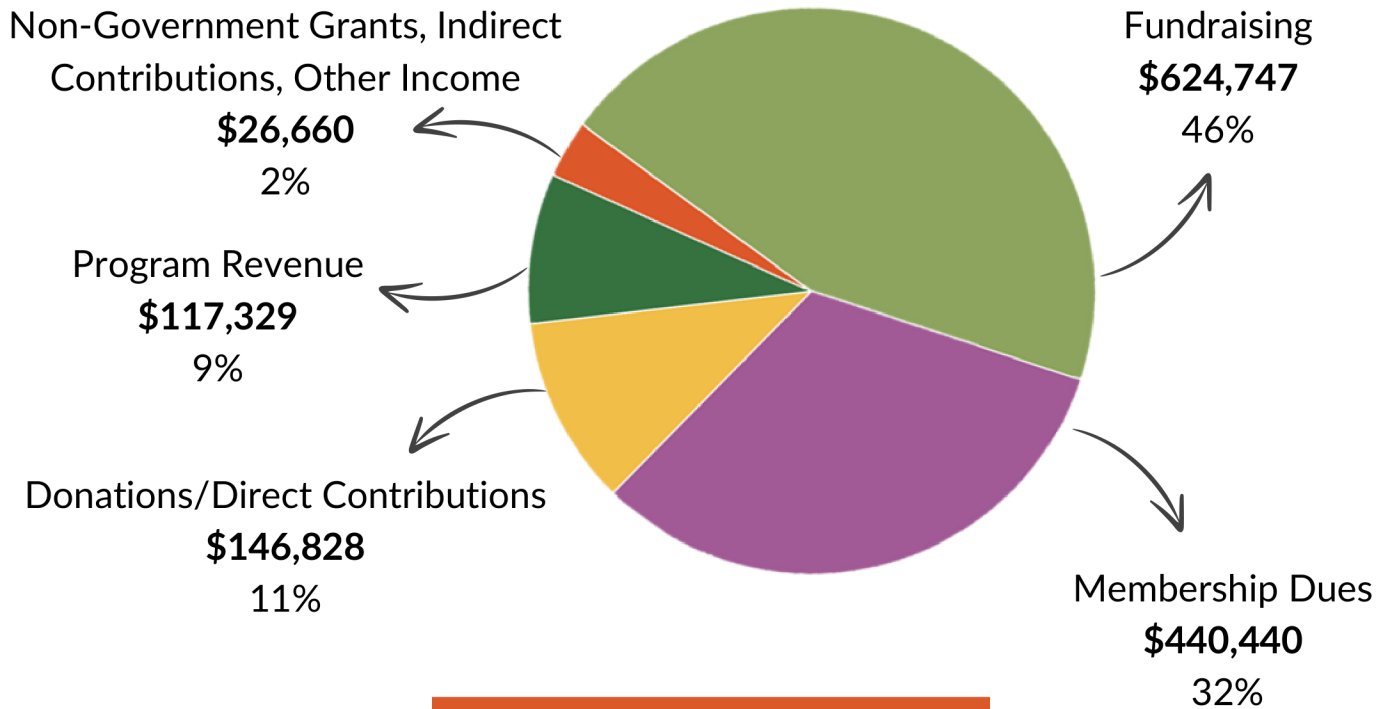
Chapters successfully propagated 4,049 milkweed plugs, essential for monarch butterflies, and collected 25.18 pounds of clean milkweed seeds.

 Adrian Knowles

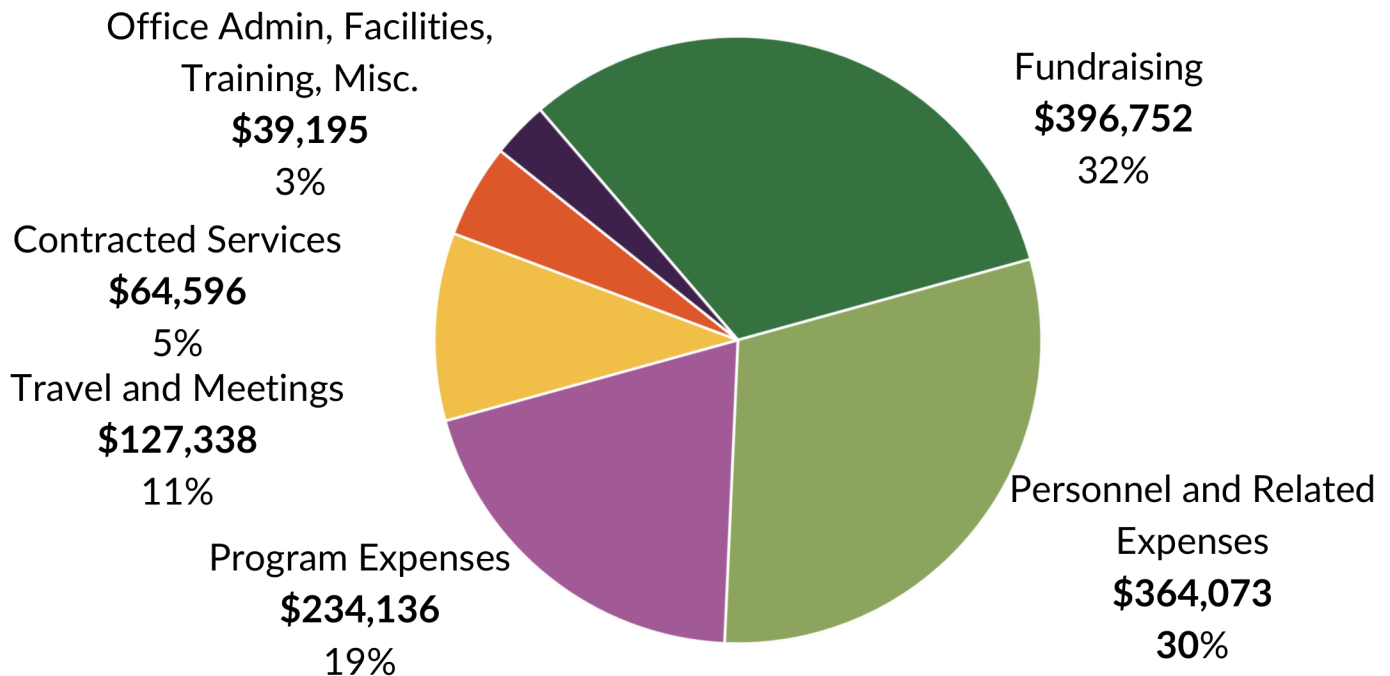


FINANCIAL REPORT

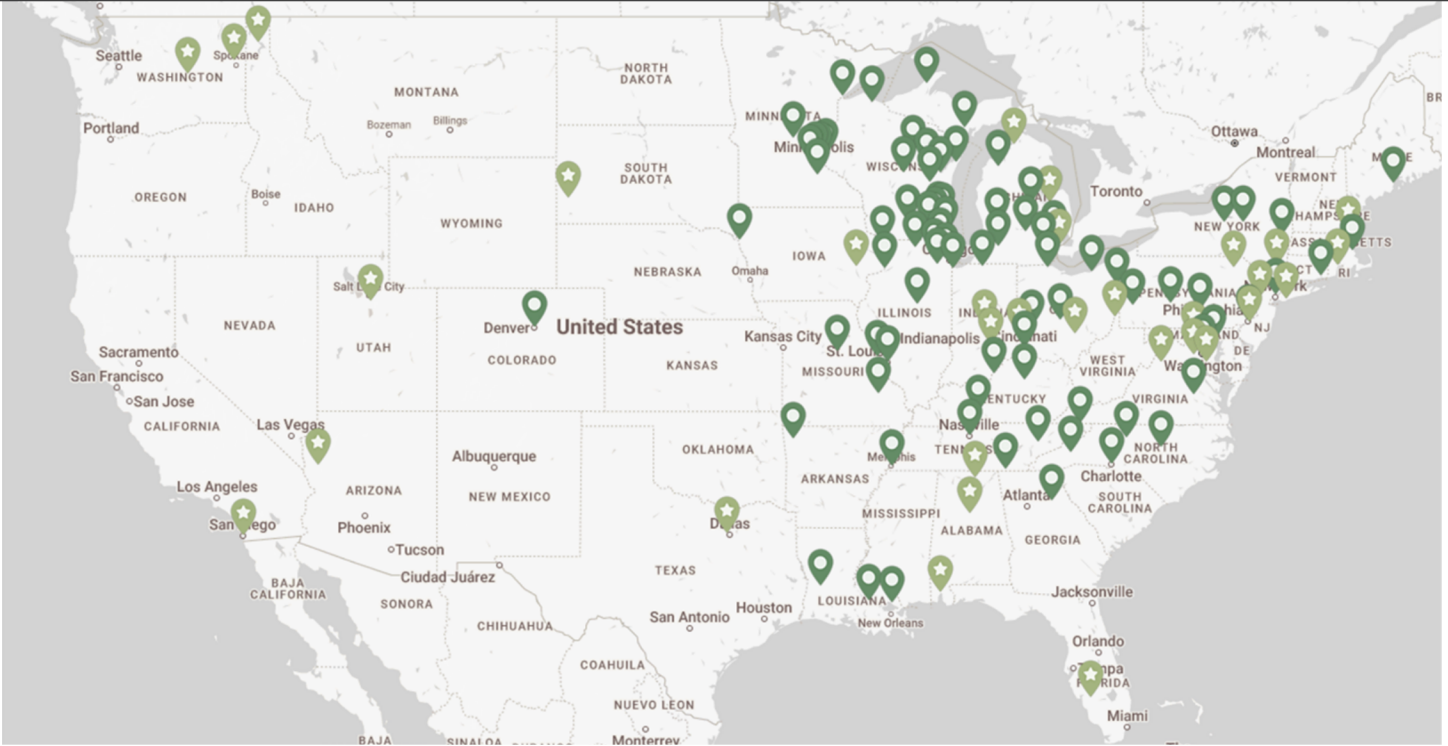
REVENUE \$1,356,004



EXPENSES \$1,226,091



CHAPTERS



2023 BY THE NUMBERS

84 Chapters

18 Seedlings launched

5 States added

729 Chapter Leaders

CHAPTERS THAT CHARTERED

Jo Daviess County, IL
Pontchartrain Basin, LA
Midcoast Maine, ME (NEW!)
Chequamegon Bay, WI
Pennsylvania Ridge & Valley, PA
Greater Baltimore, MD
Greater Richmond Virginia, VA
Chesapeake Bay, MD (NEW!)
San Diego, CA (NEW!)
Greater Indianapolis, IN (NEW! 2024)
North Alabama, AL (NEW! 2024)
Mid-Hudson Valley, NY (NEW! 2024)
Wayne County Michigan, MI (NEW! 2024)



SPECIAL THANKS

Annual Appeal

We are grateful for the Wild Ones members and chapters that stepped up to support the 2023 Annual Appeal campaign. Over 700 individuals donated to help reach our \$50,000 goal. We also received a \$1000 pledge from My Home Park. A special thank you to these 14 chapters:

Front Range	Keweenaw	Root River
Gibson Woods	Lexington	SE MN Prairie Partners
Greater Dupage	Loess Hills	South Bend
Green Bay	Nation's Capital Region	Tennessee Valley
Illinois Prairie	Rock River Valley	

Wild Ones Journal Sponsors

Acadiana Native Plant Project, Agrecol, Allendan Seeds, Amanda's Garden, Aster Plans Bee Friendly Nursery, BeeWise Native Plants, Carol Irving, Cason Land & Water Management, DreamWeaverKreations, Ernst Conservation Seeds, Feral Flora, Honeywood Garden Design LLC, Izel Plants, Johnson's Nursery, Marti Arnold (Charlotte's Crossing), Melissa Zelena, Michigan Wildflower Farm, Midland Recyclers, Midwest Groundcovers, Minnesota Native Landscapes, Missouri Wildflowers Nursery, Morning Sky Greenery, Native Roots Inc, Natural Shore Technologies, Natural Texas, Nature's Seed NatureSpace LLC, NDAL, ODC Network, Pollinator Patches LLC, Possibility Place, Prairie Moon Nursery, Prairie Nursery, Prairie Seed Source, Red Stem Native Landscapes, Redbud Native, Roundstone Native Seed, Shooting Star Native Seeds, Sierra Club, Sugar Creek Gardens, TapTeal Native Plants, Trina Brown, W&E Radtke/Northern Sunset Perennials, Washtenaw County Conservation District, Water It With Love Landscaping, Wild Birds Unlimited of Green Bay, Wild Ones Rock River Valley (IL) Chapter, Wild Rose Landscaping, Wildlife Rescue Center, WildType Plants, Woods Landscape Design



AFFILIATE MEMBERS

Acadiana Native Plant Project, Alabama Cooperative Extension System, All Things Edible, Alt-Eco-Sol, Ardmore Tree Stewards (PHS Tree Tenders), Aull Nature Preserve, Backyard Butterflies, Bloomfield Hills Schools / Johnson Nature Center, Bridget Center, Inc, Bristlecone Gardening, LLC, Buckthorn Project In., Capital Region PRISM, Cascade Charter Township, Center for a Sustainable Future, Chesapeake Natives, Chippewa Nature Center, City of Muscatine, Colorado Native Plant Society, Connecticut Audubon Society - RTPEC, Connecticut College Arboretum Campus, Connecticut Outdoor & Environmental Education Association, Conscious Planet (Save Soil), Daemen College, Door County Master Gardeners Association, Forrest Career & Tech Center, Fox Valley Technical College, Franklin Simpson Parks and Recreation, Franklin Square Historical Society, Friends of the Wapsi/Wapsi Environmental Center, GaiaScape, Garden Party Collective, GardenVitals LLC, Glacier Gateway Elementary, Good Natured Landscapes LLC, Grounded Strategies, Grow Pittsburgh, Guardians of the Prairie and Forest, Heckrodt Wetland Reserve, Heritage Flower Farm, Heritage Hill State Historical Park, High Plains Environmental Center, Honeycomb Arts and Wellness Collective, Indiana Native Plant Society, Jo Daviess Conservation Foundation, Kannagara Woods Botanical Sanctuary LLC, Kittamaquidi Community Church, Lake Edge Learning Center, Lauritzen Gardens, LaValley, INC, Liberty Hyde Bailey Museum, Little Creek Nature Area, Litzsinger Road Ecology Center, Lloyd Library & Museum, Local Ecotype Richmond Natives, Lost River Cave, Love Our Land, LSU AgCenter, McCallie School, Midland Recyclers, Midwest Native Plant Society, Inc., Montessori Earth School, Nahant Marsh Education Center, Native Flora Seeds Inc., Native Plant Garden Group, Native Plant Initiative of Greater New Orleans, Native Plant Society of Texas, Nature's Nursery, Neighbors for Native Plants, North Olmsted Garden Club, Northern Native Plantscapes, Northern Rocky Mountain Biodiversity Challenge, Oak Brook Park District, Owl's Hill Nature Sanctuary, PA DCNR BOF: Rural and Community Forestry, Perfect Earth Project, Phipps Conservatory, Pilgrim Center, Plymouth Pollinators, Pollinator Friendly Alliance, Pollinator Patches, LLC, Queen City Pollinator Project, Richard Webb, River Bend Gardens, River Valley District Library, Rochester Garden Club, Rock Island County Soil & Water Conservation District, Saline Landscape and Design, Sally Manzara Interpretive Nature Center, Seno Kenosha Racine Land Trust Conservancy, Seton Hill University, Shaler Garden Club, Sherrard High School/Sherrard School District, Illinois, Six Rivers Land Conservancy, Southeastern Wisconsin Invasive Species Consortium, Inc, Southside Community Garden, St. Paul of the Cross, Stewards of Kleinstuck, Stonington Garden Club, Sunday Assembly Pittsburgh, A Secular Community Which Celebrates Life!, Thacher Nature Center, The Montessori School, The Nature Center at Shaker Lakes, The Nature Center at Steele Creek Park, The Nature Conservancy, The Wilderness Greenhouse-DIAKON Youth Services, Town of Windsor, Trees, Bees, & All of These, Trent Creative, Unitarian Universalist Church of Bowling Green, University of Minnesota Landscape Arboretum, UpstreamPgh, Utah Friends of Monarchs, Warren County Public Library, Warren County Stormwater, Water It With Love Landscaping, LLC, Watershed Association of the Tuckasegee River, WebbedFoot Designs, Inc., Western Arkansas Child Development, Inc., Wild You, XERCES Society



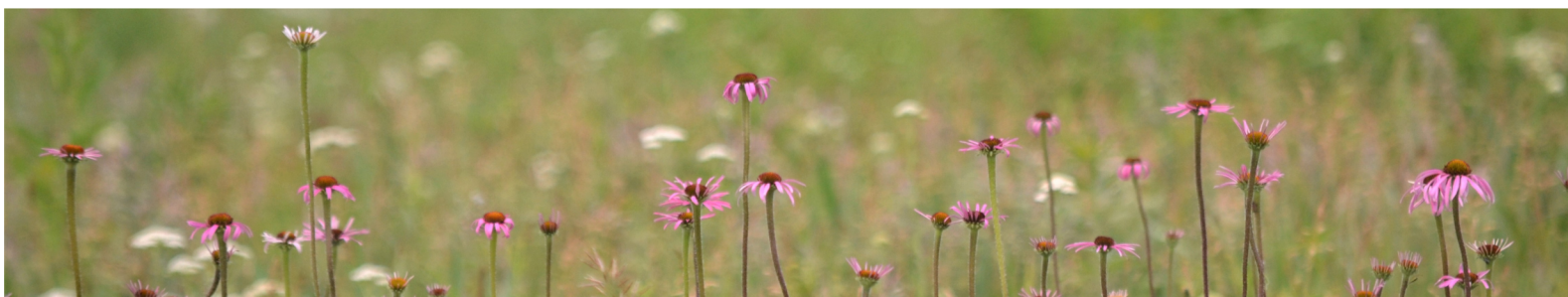
BUSINESS MEMBERS

A Few Bad Apples Cider, All Beings Ecoscapes LLC, Allegheny Financial Group, Amanda's Native Garden LLC, American Meadows, Inc, Arcadia Natives, Beavers Abundance, Bendy Stem Farm, Best Buds Independent Garden Center, Blue Line Dog Training, Blue Mind Psychological Services, Blue Stem Natives, Bona Terra LLC, Bountiful Gardens, Bradford Blooms, Branch Gardens, LLC, Brokenfork, Butterfly Alley LLC, Butterfly Ridge Butterfly Conservation Center, Cande Native Landscape, Casey's Garden Shop & Florist, Cason Land & Water Management, LLC, Caterpillar Chow, LLC, Cherry Ridge Retreat, Columbus Landworks, LLC, DEL - Diverse Environmental Landscapes, Dig Right In Landscaping, Dirty Gaia, Earth Love Gardens, Ecobay Landscape | Design, Ed's Buckthorn Control, Enabling Healthy Habitats, LLC, Ernst Conservation Seeds, Fields to Forest, Fleurscape Garden & Design LLC, Four Cedars Farm, Four Season Nursery, Fourth River Workers Guild, Freshwater Farms of Ohio, Inc., Friday's Fresh Market LLC, Great Lakes Landscape Management, Greenscape Gardens, Greenwich Gardens and Native Plants LLC, GroWild Inc, Habitat Guild, Inc., Habitat Landscaping, Healthy Home Habitats, Hidden Savanna Nursery, High Country Gardens, Highstead Foundation, Honeywood, Garden Design, LLC, Hungry Hook Farm LLC, IAmbiance Garden Design LLC, Indigo Creek Native Plantscapes, Indigo Gardens & Design, Izel Native Plants, Jake's Grass Plus, Johnson's Nursery Inc, Kalamazoo Wood Floors, Karen Talbot Art, Kellar Farms Nursery, Landscape Design, Landscape Solutions of Nashville, May Apple Gardening and Ecological Design, McMullen House Bed & Breakfast LLC, Meadow City Native Plant Nursery, Meadowsweet Botanicals, Michigan Wildflower Farm, Midwest Groundcovers, LLC & Natural Garden Natives, Milwaukee Montessori School, Missouri Wildflowers Nursery LLC, Morning Sky Greenery, My Backyard at Nectars, Native By Design, Native Roots, Inc., Native Roots, LLC, Natura LLC, Natural Communities LLC, Nature Dads, Nature's Cure, LLC, Nature's Seed, NES Ecological Services, Next Nature, Northern Holler Nursery and Gardens, Numine Nutrition & Wholeness LLC, Oakland County CISMA/Parks, Ohio Native Concepts LLC, Ohio Native Growers, Ohio Native Habitat Nursery, Ohio Native Landscapes, OPN Seed, Phyto Bello LLC, Prairie Moon Nursery, Prairie Nursery, Pretty City Gardens and Landscapes LLC, Professional Gardener & Landscape Services, LLC, Purple Martin Coaching, LLC, Q&A Landscaping, Recreative Natives, Red Stem Native Landscapes, Regenerative Property Management, Revolution LandScapes, River City Natives LLC, Ross Land Studio, Ruth's Native Landscaping, Scioto Gardens Nursery, Scott Byron & Co., Inc., Shadyside Nursery, Shooting Star Native Seeds, Songbird Station, South Bay Sustainable Communities Network, Spirited Gardener, Inc., St. Louis Native Plants LLC, Tapteal Native Plants, LLC, The Deer Cage, The English Gardener Ltd., The Garden Shop, The Growing Place, Thomas Nursery Inc., Tish Landscape Design, Tumbleweed Gardens, Twig Landscape Design, Villani Landshapers, Wasco Nursery & Garden Center, White River Nursery, Whitewater Gardens Farm, Wild Acre, Wild Rose Landscaping, Wildflower Woods - Native Plant Nursery, Wildtype Native Plant Nursery, Ltd



LIFETIME MEMBERS

Nan & Neil Adams, Charlotte Adelman & Bernard Schwartz, Janet & John Allen,
Carol Andrews, Patricia Armstrong, Ben Bartelt, Premisri Barton, Lisa Beckwith, Larry Bell,
Carol Biesemeyer, Sharon Bloomgarden, Meribeth Bolt, Susan & Darrell Borger, Marie Bosch, Carolyn
Braun, Michael Brondino, Kathy Carter, Marilyn Case, Pat Clancy,
Ruth Ann Cloonan, Ann Curry & Judy Neipp, Kathy Daniel & David Braun, Peggy Dankert,
Venkat & Rama Davarapalli, Pamela Deerwood & John Arthur, Carol Delheimer,
Rose & David Drain, Patricia Duke, Amara Edin, Christina Finken, Susan Forbes,
Stephen Ford, Brittani Furlong, Jaima Galfi, Janet Gebler, Denise & Fritz Gehring,
Phillip & Betty Georgeau, Paul Gessler, Kate Gill, Lynn Gilles, Kate Gillogly,
Katherine Gould-Martin, Ernie Green, Richard Griffiths, Derek & Amanda Hackbarth,
Lena Hall & Erin Thurman, Steven Hall & Keiko Kojima, Janice Hand & Rick Sanders,
Peggy & Greg Hanson, William Hastings, Katrina Hayes, Tamara Hayter, Laura Hedien,
James Hewitt, Patsy Hirsch, Elizabeth Hiser, Kevin Holdmann & Lenae Weichel, Pam Holy & Ingrid
Verhulst, Phil Houser & Marcia Rossi, Elaine Hutchcroft, Jess Isenberg, Joy Jacobs,
Lin Jennewine & Todd Huffman, Alexandra Elise Juriga, Sara Kampf, Sybilla Kase,
Cornelia Kase, Diane Keeney & Coleman Harwell II, Sue & Bob Kinde, Margaret Knight &
Amy Kinoshian, Tracey & David Koenig, Kathleen Kojis, Terri Koontz, John & Kaye Kreutzfeldt, Duane
Kurapka, William & Nellie Lannin, Kent & Kathy Lawrence, Lisa Lemza, Janaan Lewis, Dick & Tink
Linhart, Kim Lowman Vollmer & John Vollmer, Kay MacNeil, Barb & Mike Madden, Richard & Diane
Madlon-Kay, Christy Malmsten, Tracy & Doug Marconnet, Karen Matz &
John Skowronski, Anne McDonald, Catherine & Todd McKenzie, Mary Meinhardt,
Eileen & Seamus Metress, Kathleen Michels, Jessica Miller, Jack & Pamela Muirhead,
Janet Nardolillo, Gretchen Neering, Linda Nishioka, Mariette & Dave Nowak, Sandra Nussbaum, Mike &
Sylvia O'Brien, Bonnie O'Leske, Betty Jo Page, Lydia Pan, Kei & Susan Pang,
Eugenia Parker, Frances Peebles, Elaine Pesavento, Andrew Pfisterer, Mandy & Ken Ploch,
Alicia Ploetz-Griebenow & Brian Griebenow, Carrie Post, James Poznak & Susan Messer,
Jennie Rabinowitz, Bret & Jina Rappaport, Randy Reddemann & Bill Davidson, Anna Reilly,
Karen Retzer, Jane Reuber, Annette Robertson, Nancy Roggers, Laurie Rosenthal, Ted Ross, Diane
Scher, Lisa Scribner & Dean Doering, Michelle Serreyn, Bettegail Shively, Robin Siegel, Neil Sikora, Janet
Silverman, Jane Slade, Guy Smith, Sherrie & Bill Snyder, Janis Solomon,
Brook Soltvedt, Nicole Sova, Mary Spires, Larry Stacey, Barb Stanek, Lisabeth Stanley,
Don Story, Ruth Stump, Fran Tatum, Glenn Teschendorf & Mary Anne Derheimer,
Mary & John Thiesing, Laurel Toussaint, Tori Trauscht, Karin Trenkenschu, Margaret Tuten, Steven
Ulrich, Peter & Colleen Vachuska, Roger & Lynn Van Vreede, Julia Vanatta,
Bruce VanEnkevort, Namrata Varty, Kayla Velo, Sarah Vradenburg, Karen Wedde,
Jean & Tom Weedman, Sally Wencel, Dave & Joan Wendling, Rich & Liz Whitney,
Stephen Windsor, Barb Wolter, Susan Wright, Don & Benia Zouras



LEADERSHIP

From humble beginnings in 1977, our organization has grown nationwide, inspired by leaders like Lorrie Otto and Doug Tallamy. With 88 chapters across 35 states and 32 new seedling chapters, we're fostering habitats for pollinators and promoting biodiversity. As we move into a new year, Wild Ones achieved a milestone, welcoming over 10,000 members dedicated to preserving our planet through native plant advocacy. Together, we sow seeds of environmental stewardship, nurturing a greener tomorrow, one native plant at a time.



Loris Damerow, President of the National Board of Directors
2020-24 | Ann Arbor (MI)

BOARD OF DIRECTORS

Meg Delaney - Vice President
2023-24 | Ann Arbor (MI)

Rita Ulrich - Secretary
2023-24 | Twin Cities (MN)

Carl Bahneman - Treasurer
2023-26 | Menomonee River Area (WI)

Ken Foster
2023-26 | Parter-at-Large (MN)

Eric Fuselier
2021-24 | Ozark (AR)

Holly Latteman
2023-24 | Columbus (OH)

Carolyn Miller
2023-26 | Red Cedar (MI)

Dave Neu
2023-26 | Lake-to-Prairie (IL)

Pam Todd
2023-26 | West Cook (IL)

OUTGOING DIRECTORS

Lisa McNeil | Menomonee River Area (WI)

Leah Pollack | Nation's Capital Region (MD)

Jim Poznak | West Cook (IL)

Sally Wencel | Tennessee Valley (TN)

HONORARY DIRECTORS

Neil Diboll | Lifetime | Central Wisconsin (WI)

Doug Tallamy | Lifetime | Partner-at-Large

Heather Holm | 2020-2024 | Prairie Edge (MN) **Larry Weaner** | 2022-2025 | Partner-at-Large



NATIONAL STAFF

Wild Ones' dedicated team tirelessly supports our mission and each staff member has shown unwavering commitment to our cause throughout the past year. From managing organizational infrastructure to providing chapter and member services, marketing, outreach, and educational programming, our staff ensures the smooth operation of the organization. As we reflect on the impact we've achieved together in 2023, we're energized to carry this momentum forward into 2024, continuing to grow environmental stewardship across the country.

Jen Ainsworth, Executive Director
Fox Valley Area (WI) - 2020



Katherine Freund | Chapter Liaison | Fox Valley Area (WI) | 2023

Crystal Helmer | Marketing & Communications Manager | Green Bay (WI) | 2023

Rachel Jaschob | Executive Assistant | WI | 2020

David Kryzaniak | IT Manager | WI | 2022

Josh Nelson | Development Director | Greater Kane (IL) | 2023

Lisa Olsen | Chapter Liaison | Front Range (CO) | 2021

Sara Rassing | Education & Program Coordinator | IL | 2023

Deanna Sharp | Admin & Marketing Assistant | WI | 2023



 Kristy Walker



SUMMARY

In 2023, Wild Ones made strides in promoting native landscapes through education, advocacy, and collaborative action. The organization saw substantial growth, with educational events increasing by 87% in attendance, driven by over 18,000 volunteer hours. Growing advocacy efforts led to policy changes, including several regionally important ordinances. Our organization is growing because chapters are sharing the Wild Ones mission in the press, on social media, and connecting with new members at events.

Collaborative actions resulted in over 161 new partnerships, bolstering community-driven habitat restoration with over 24,000 native plants donated. Membership grew to over 9,600 - reflecting a growing commitment to environmental stewardship. Overall, led by the work of chapters and numerous volunteers, Wild Ones made significant strides toward our vision of native plants and natural landscapes thriving in every community.



What Next?

Wild Ones looks forward to 2024, focusing on growth and expanding initiatives in education, advocacy, and collaboration to further our mission.

- Growth in partnerships & sponsorships
- Increase in fundraising & membership
- Launch of merch store & reading lists
- Funding for demonstration gardens
- New promotional & educational content
- Support for seedling chapters
- Expansion of advocacy efforts
- New native garden designs
- Chapter leadership guides & support
- Certified Native Habitat Program